



Elettra Sincrotrone Trieste



Elettra  
Sincrotrone  
Trieste

# CE marking process @ Elettra

Marco Peloi

*Head of Industrial Liaison Office*

*Elettra Sincrotrone Trieste*

*marco.peloi@elettra.eu*

## Know how to be exploited

Elettra, among the 400 employees, has electronic and software engineers, physicists and a number of technicians experts in many fields that:

- ✓ Designed and built the Elettra storage ring more than 20 years ago and upgraded with a number of Beamlines in the experimental hall
- ✓ Designed and built Fermi facility (2007-2010)
- ✓ Fermi Upgrade (2015-2019)
- ✓ Elettra 2.0 Upgrade (2017-2026)



Competences, Know-how, Expertise that can be exploited in the development and commercialization of scientific instrumentation

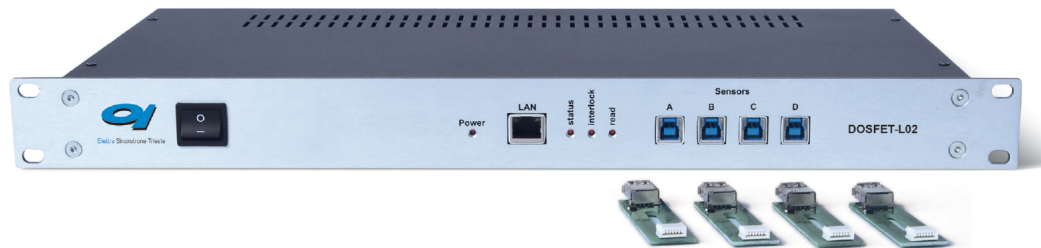
# Development and Sale of scientific instrumentation

Picoammeters: PSI (CH); Australian Synchrotron, ESRF (FR)  
Dectris, ANL (USA), Campinas (BR), Bruker (DE),  
EMBL (DE)



Power Supplies: Kyma (I), Soleil (FR), Canadian Light Source,  
Diamond (UK), ANL (USA), INFN (I), SESO (FR)

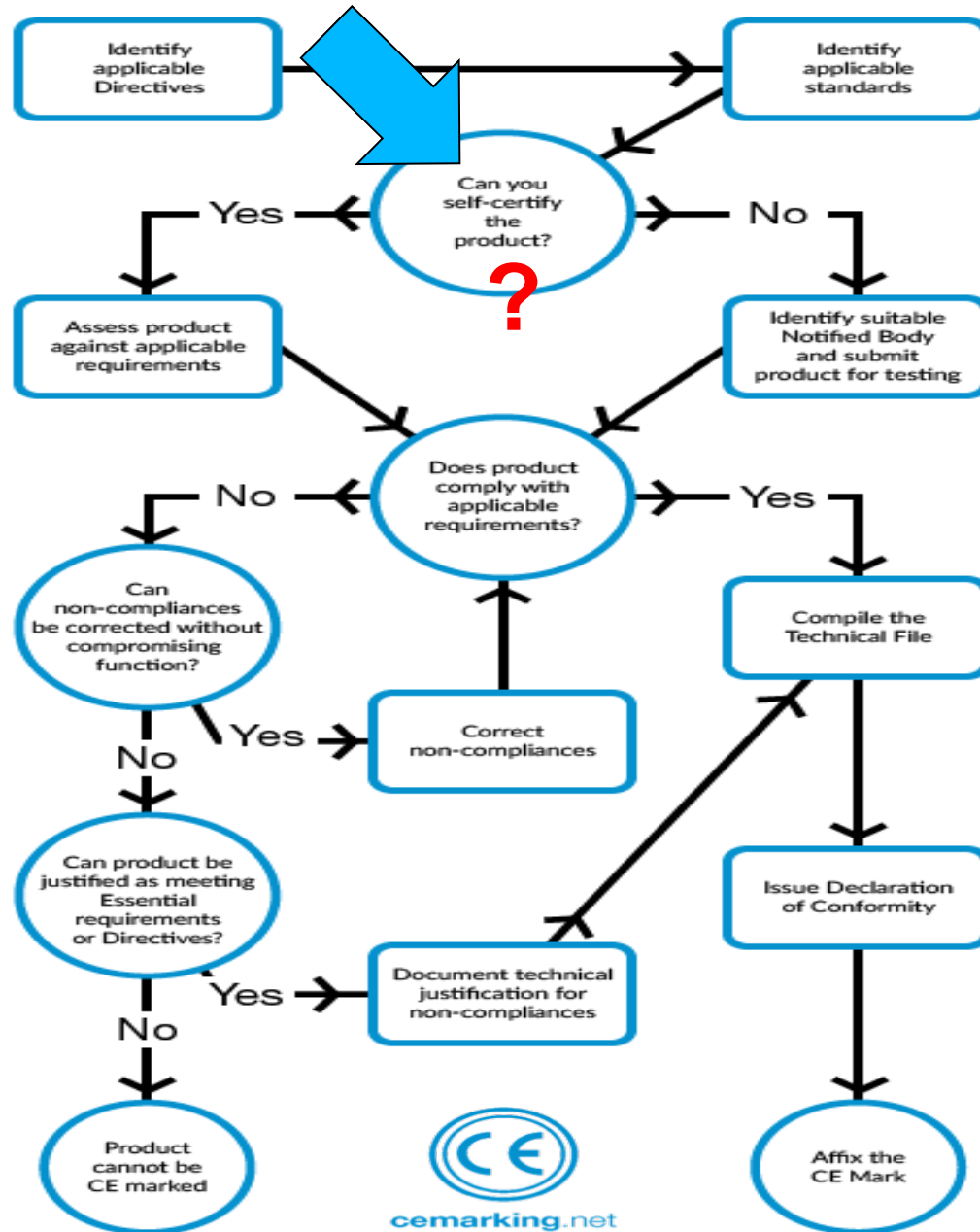
Other instrum. Diamond (UK), ANKA, Changan Institute of Optics (CN),  
Toyota (JP), Campinas (BR), INFN (I)



- ✓ Manufactured/tested by an external supplier
  - *CE mark in charge of external supplier*
  
- ✓ Manufactured by external supplier and tested by Elettra
  - *CE mark in charge of Elettra*



### CE MARKING PROCESS FLOWCHART



# CE mark testing

For the two directives:

Electromagnetic Compatibility (EMC) (2014/30/CE)

*is intended to apply to nearly all electrical equipment*

The low voltage directive (LVD) (2014/35/EU)

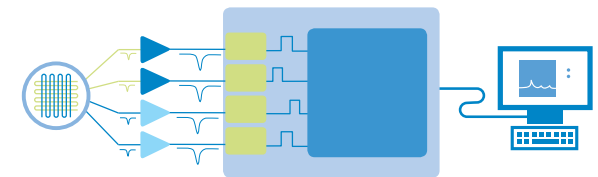
*between 50 and 1000 V AC and between 75 and 1500 V DC*

- Review of technical file
- *Test of equipment when needed*
- preparation and issue of **Certification Body** test report.
- **Certification Body**: certificate for safety

Operated by the IEC System of Conformity Assessment Schemes for Electrotechnical Equipment and Components (IECEE), the IECEE **Certification Body (CB)** Scheme is an international system for mutual acceptance of test reports and certificates dealing with the safety of electrical and electronic components, equipment and products.

*The CB Scheme offers the potential of performing one test and certification to obtain one or more national certification marks in one go.*

- A 20-Ampere, 4-quadrant power supply for magnets
- DosFET Reader LO2
- 3D (x, y, t) Cross Delay-Line Detector







Elettra  
Sincrotrone  
Trieste



[www.elettra.eu](http://www.elettra.eu)