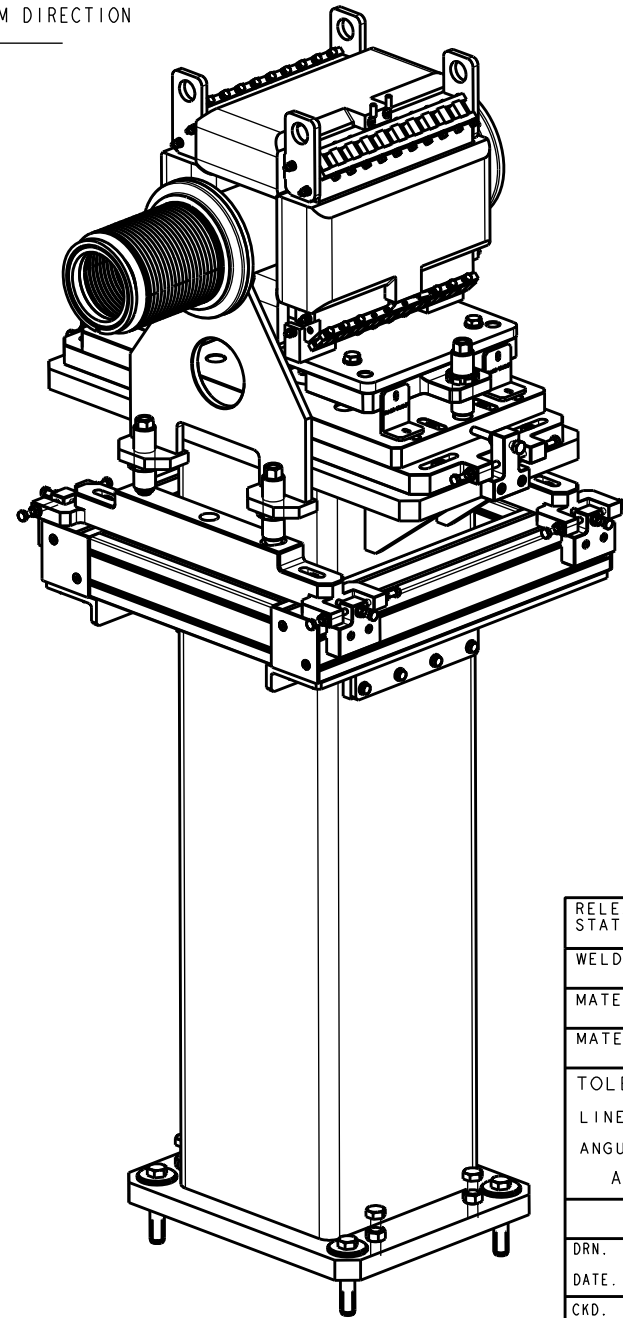
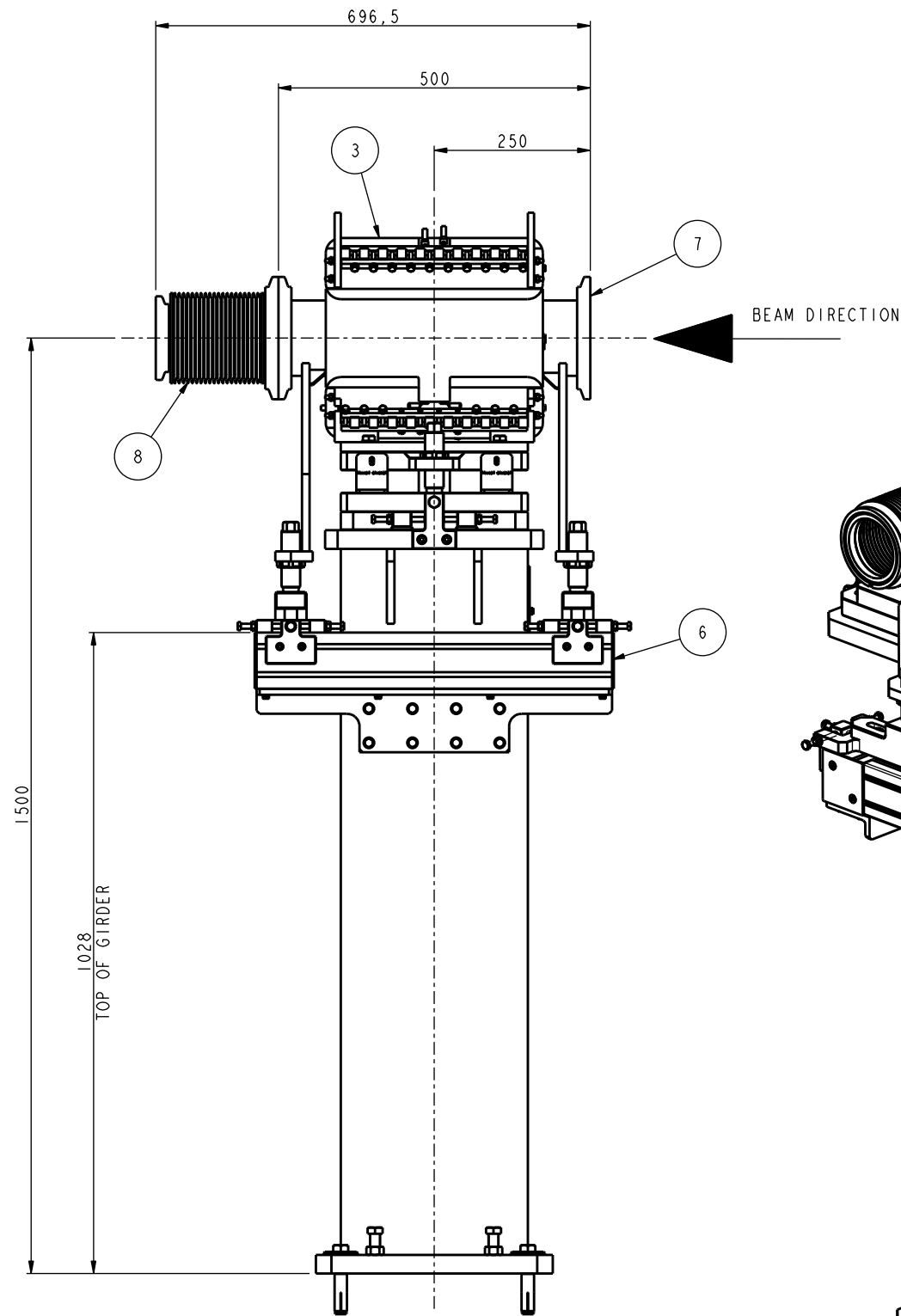
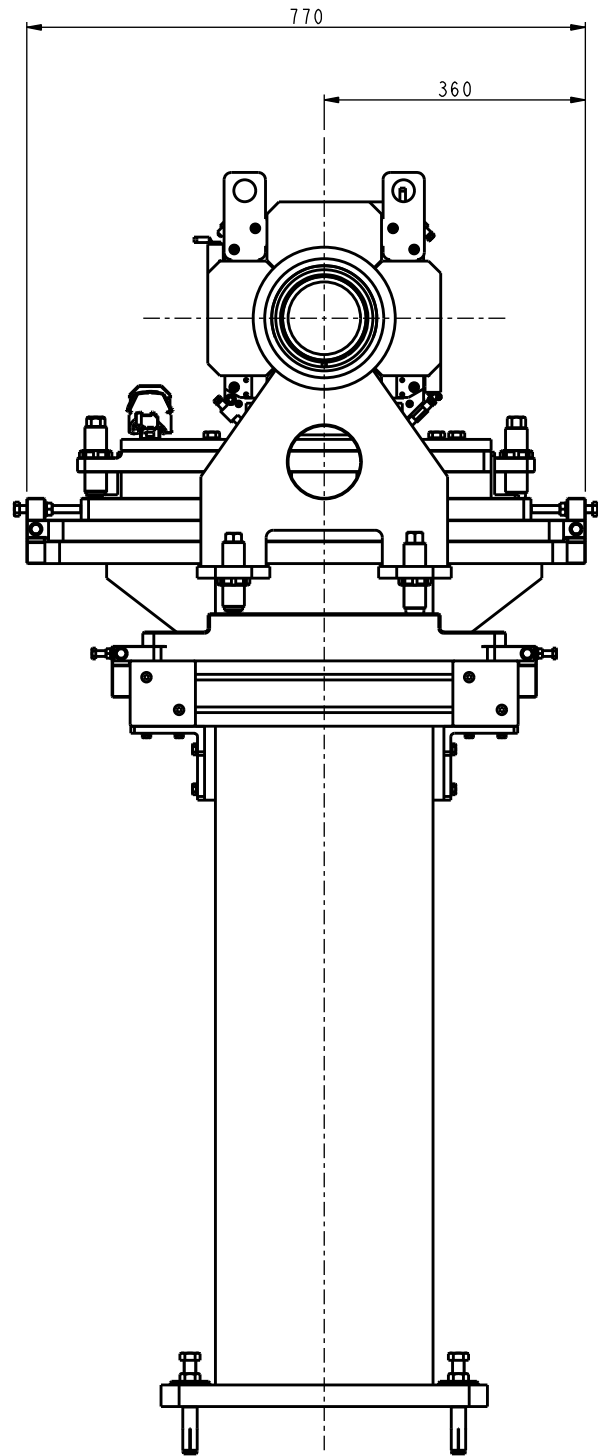


CONFORMS TO BS 8888 THIRD ANGLE PROJECTION

DRG. NO. SHEET 1 OF 1
A1 289-10907

REF	DRG No.	DESCRIPTION	QTY	REMARKS
1	289-10330	LOCK RING	3	
2	289-10332	WIXROYED M8 SPHERICAL WASHER SET	1	
3	289-11795	MAGNET - ESS CORRECTOR C8 (SIGMA-PHI)	1	
4	289-11806	KINEMATIC ADJUSTER - SPHERICAL	2	
5	289-11807	KINEMATIC ADJUSTER - FLAT	1	
6	289-11824	VESSELI & CORRECTOR MAGNET SUPPORT	1	
7	289-11882	VESSEL 2 A2T-BPI MAGNET STRAIGHT	1	
8	289-11883	BELLOWS UNIT NW160_Cf / NW100_Cf QUICK RELEASE	1	
9	SHS-080-090	M8 x 90 LG HEX SKT HD CAP SCREW	1	
10	SHS-080-100	M8 x 100 LG HEX SKT HD CAP SCREW	2	



RELEASE STATUS	Approved
WELDING SPEC.	BS EN 1011-1 & 1011-3
MATERIAL SPEC.
MATERIAL
TOLERANCES UNLESS OTHERWISE STATED	
LINEAR DIMENSIONS UP TO - ± - ; OVER - ± -	
ANGULAR DIMENSIONS ± -	
ALL DIMENSIONS IN mm UNLESS OTHERWISE STATED	

TOLERANCING ISO 8015			
DRN.	KPD	SCIENCE AND TECHNOLOGY FACILITIES COUNCIL	
DATE.	25/11/19	DARESBURY LABORATORY	
CKD.	RJS	CHESHIRE	
DATE.	27/11/19	TITLE	
APPD.	RJS	ESS BEAM TRANSPORT	
DATE.	27/11/19	A2T-BP3 MODULE ASSEMBLY	
		A2T-BP3	
		DRG. NO.	SHEET 1 OF 1 ISSUE
		A1 289-10907	A
		PTC CAD PART NO.	289-10907
		USED ON	289-10940

THIS DRAWING IS THE PROPERTY OF STFC AND MAY NOT BE COPIED OR USED FOR ANY PURPOSE OTHER THAN THAT FOR WHICH IT IS SUPPLIED WITHOUT THE EXPRESS WRITTEN AUTHORITY OF STFC.

THE ENVELOPE REQUIREMENT © APPLIES TO ALL FEATURES OF SIZE UNLESS OTHERWISE STATED. SEE ISO 14405-1 FOR DETAILS.

FIRST ISSUE
A