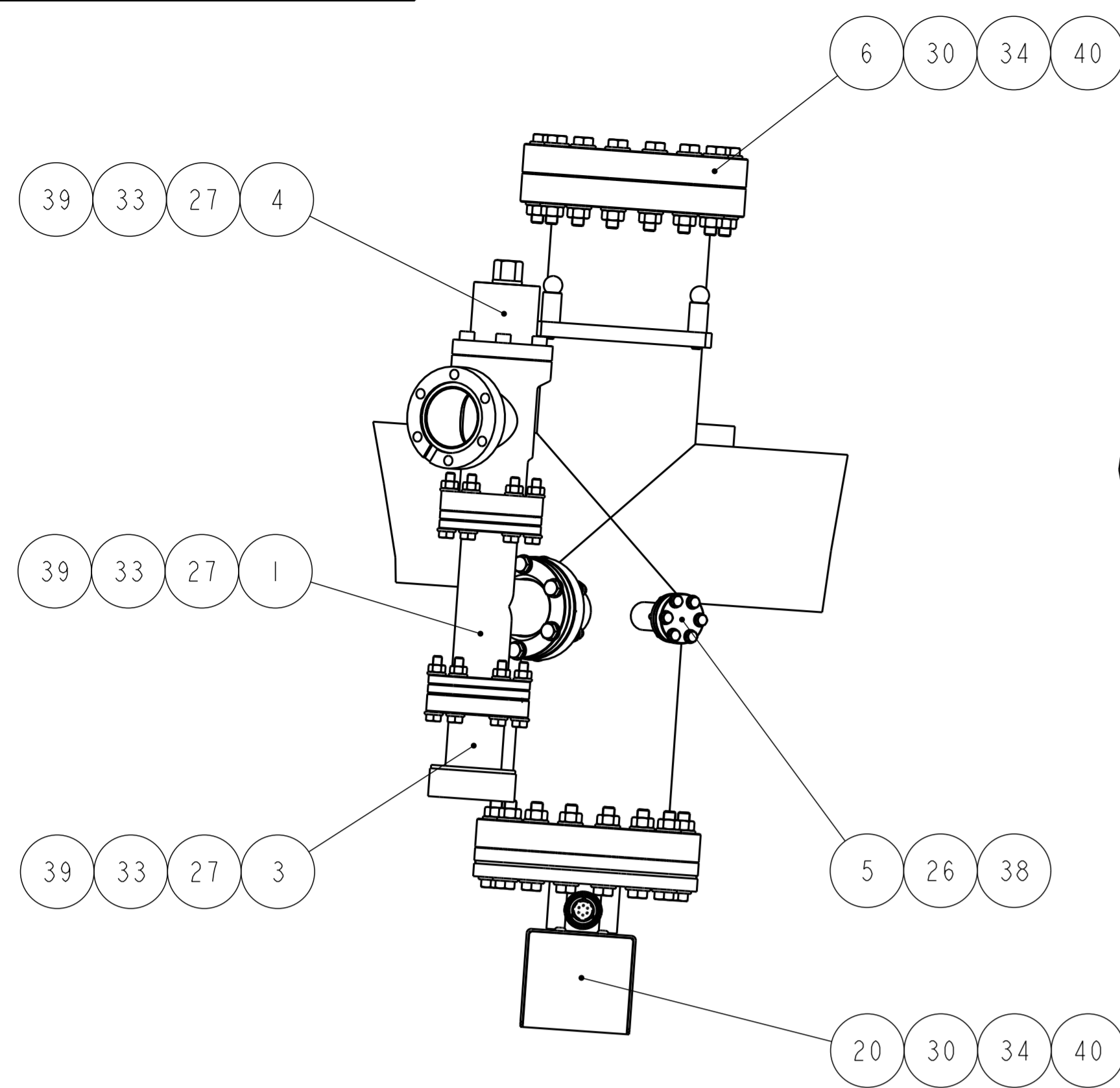
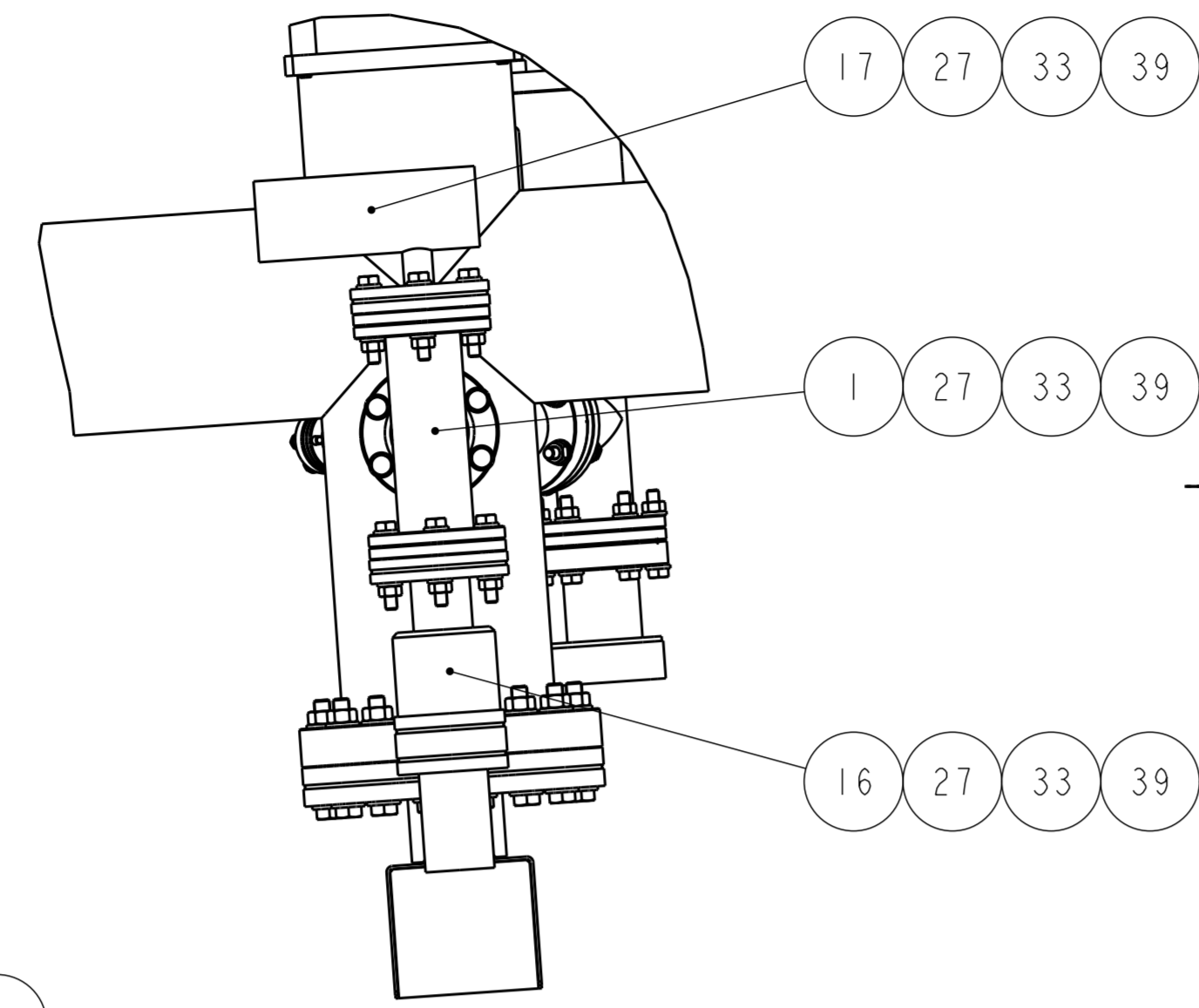


CONFORMS TO BS 8888 THIRD ANGLE PROJECTION

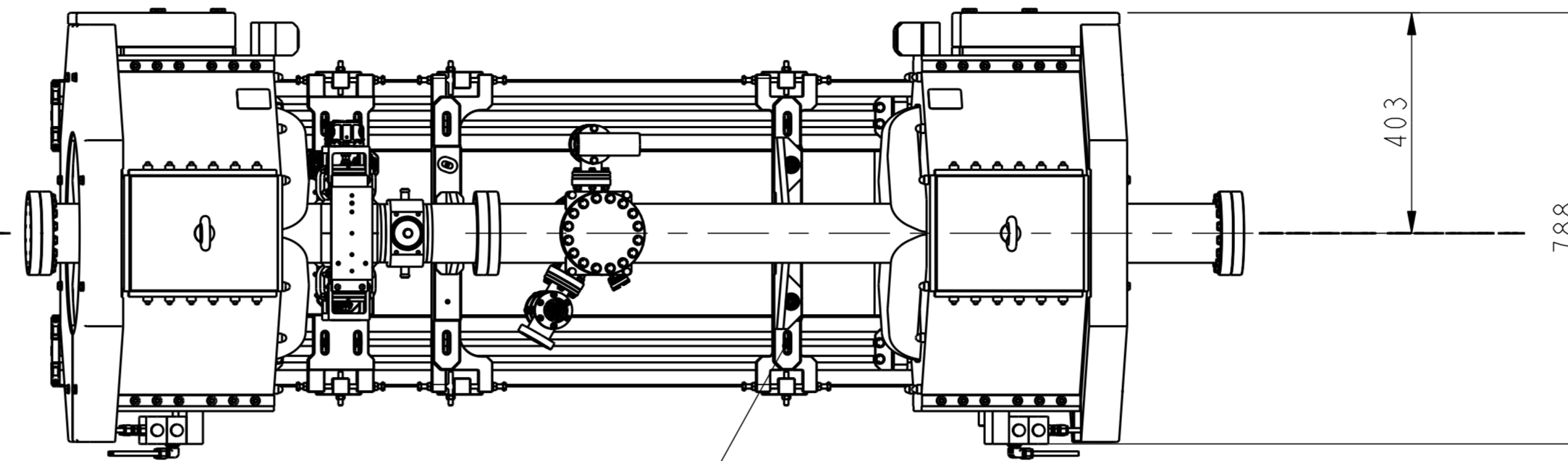
DRG. NO. SHEET 1 OF 2
A0 289-10884



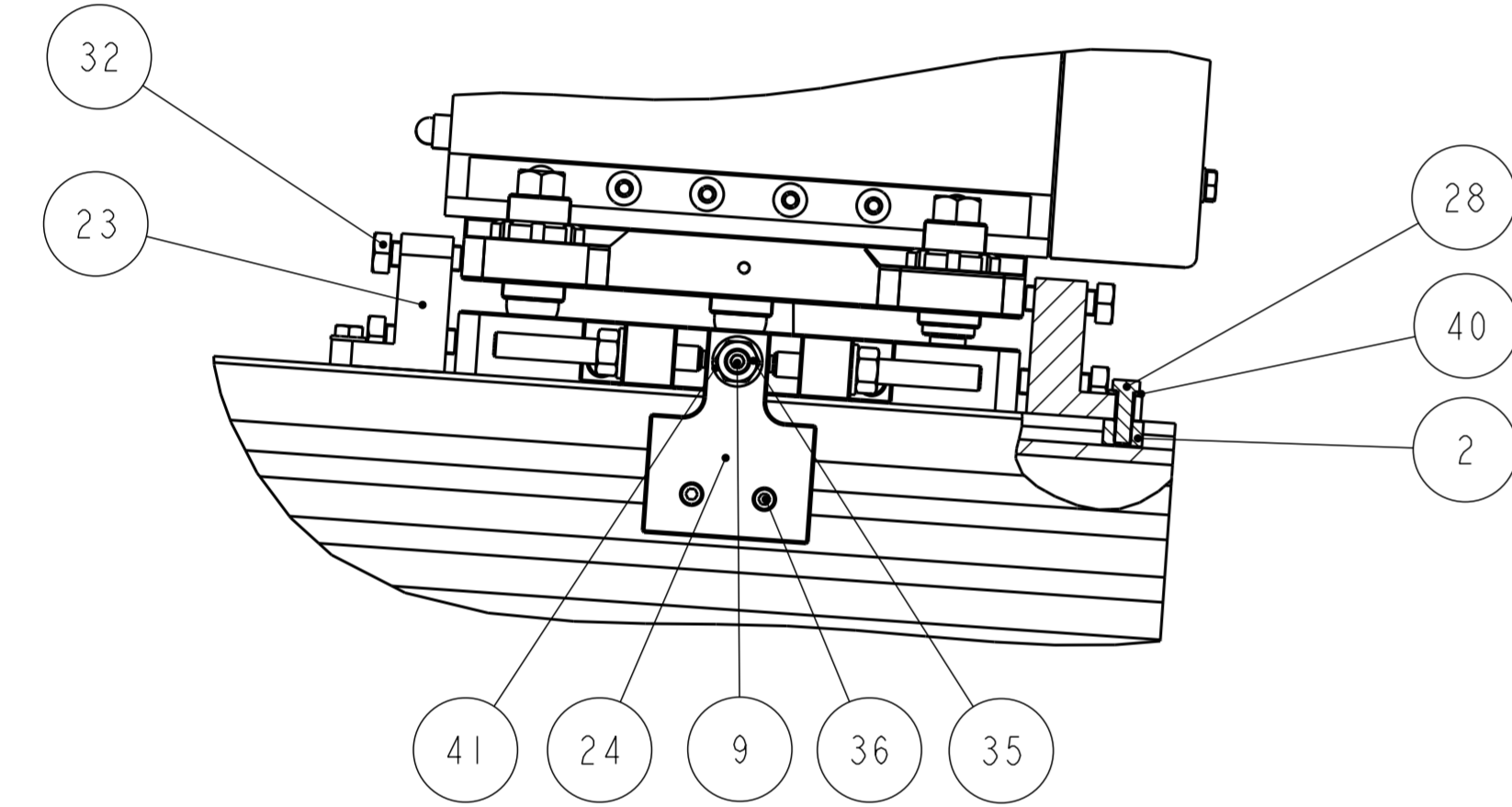
PARTIAL SECTION A
(3:10)



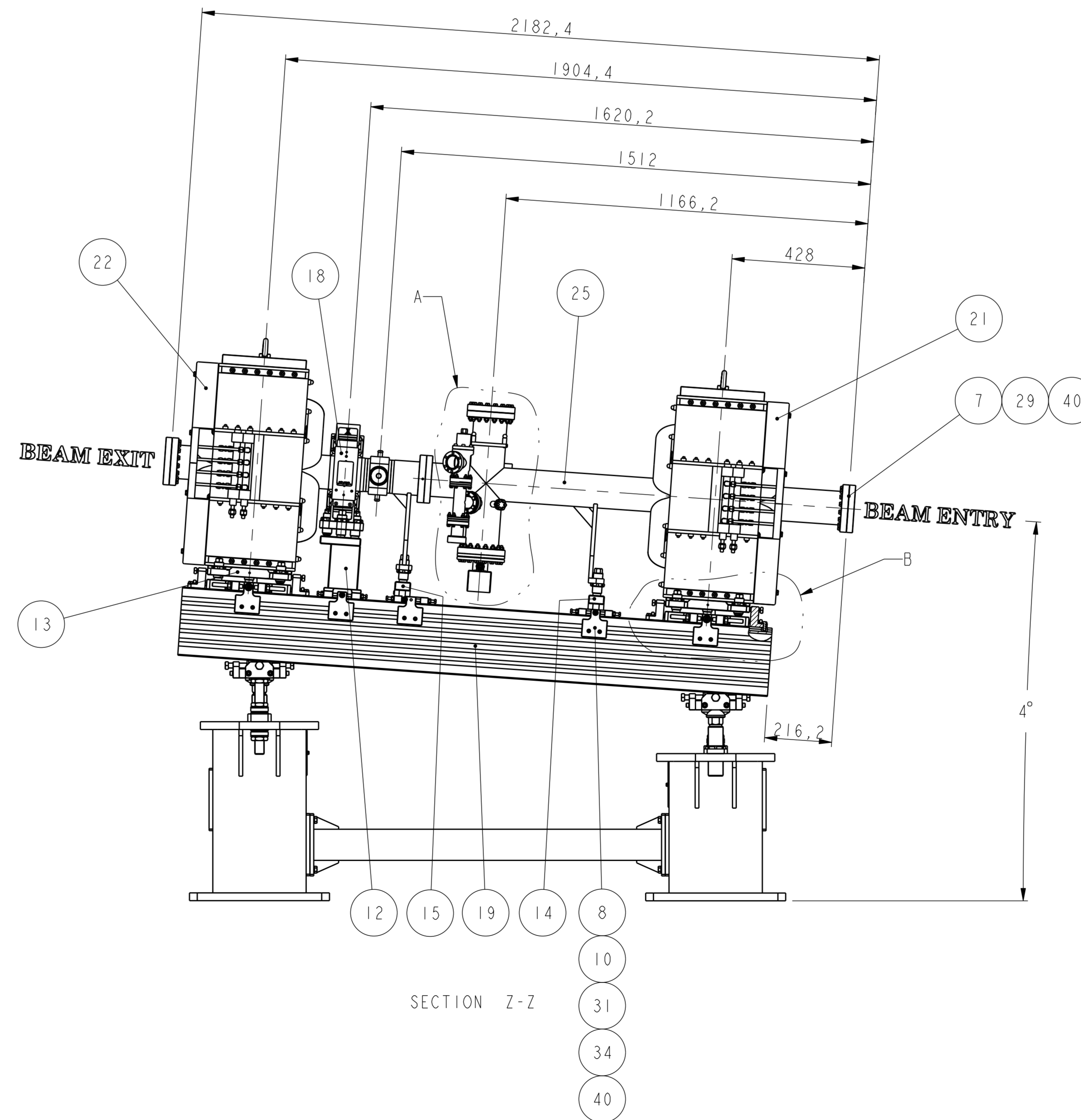
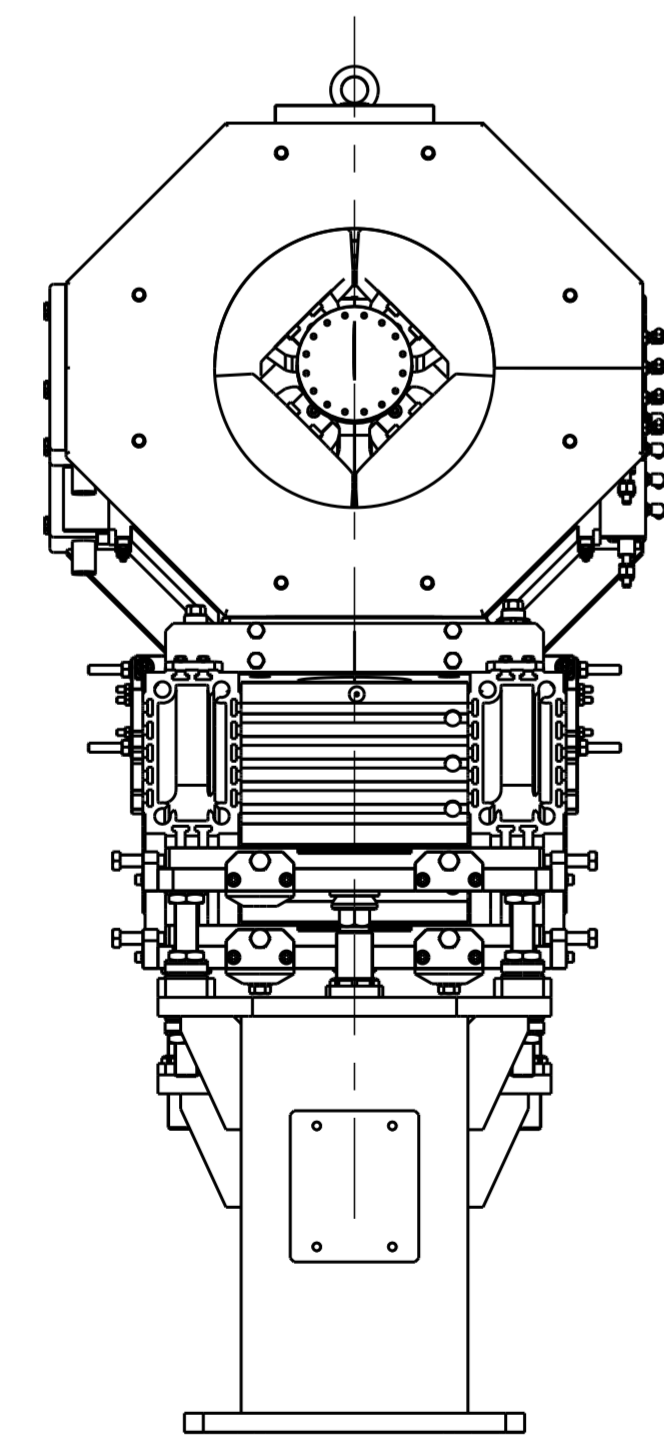
SENSOR ASSEMBLY
SCALE 3:10



37 11



PARTIAL SECTION B
(3:10)



SECTION Z-Z

| REF | DRG No. | DESCRIPTION | QTY | REMARKS |
|-----|---------------|---|-----|---------|
| 1 | 001-12888 | DN40 TEE | 2 | |
| 2 | 001-14202 | M8 T-NUT (HEPCO HTN M8) | 16 | |
| 3 | 001-14360 | MDC UHV BURST DISK | 1 | |
| 4 | 001-15072 | VAT ALL METAL VALVE SERIES 54 | 1 | |
| 5 | 048-037-01-B | 34 OD FIXED KNIFE EDGE FLANGE - BLANK | 1 | |
| 6 | 048-037-13-B | 152 OD FIXED KNIFE EDGE FLANGE - BLANK | 1 | |
| 7 | 048-037-13-BT | 152 OD FIXED KNIFE EDGE FLANGE - BLANK - TAPPED | 2 | |
| 8 | 289-10307 | ADJUSTING PLATE | 6 | |
| 9 | 289-10308 | BRASS TIPPED STEEL SET SCREW M12x100 (ONDRIVES GNI3858) | 4 | |
| 10 | 289-10309 | WIXROYD PUSHER SCREW - M8 x 65 (3416.W290) | 6 | |
| 11 | 289-10346 | M6 SLOT SCREW ADAPTOR | 4 | |
| 12 | 289-10351 | CORRECTOR COIL SUPPORT | 1 | |
| 13 | 289-10427 | MAGNET SUPPORT ASSEMBLY | 2 | |
| 14 | 289-10452 | VESSEL SUPPORT BEAM | 1 | |
| 15 | 289-10453 | VESSEL SUPPORT BEAM | 1 | |
| 16 | 289-10591 | COLD CATHODE SENSOR | 1 | |
| 17 | 289-10592 | PIRANI SENSOR | 1 | |
| 18 | 289-10774 | C6 CORRECTOR MAGNET | 1 | |
| 19 | 289-10885 | GIRDER / PEDISTAL ASSEMBLY | 1 | |
| 20 | 289-10939 | NextTorr 500 PUMP | 1 | |
| 21 | 289-11435 | Q7C100 QUADROPOLE MAGNET | 1 | |
| 22 | 289-11436 | Q7C101 QUADROPOLE MAGNET | 1 | |
| 23 | 289-11568 | ADJUSTING BLOCK | 4 | |
| 24 | 289-11578 | ADJUSTING PLATE | 4 | |
| 25 | 289-11667 | VACUUM VESSEL DG2 | 1 | |
| 26 | HHS-040-020 | M4 x 20 LG HEX HD SCREW | 6 | |
| 27 | HHS-060-040 | M6 x 40 LG HEX HD SCREW | 36 | |
| 28 | HHS-080-025 | M8 x 25 LG HEX HD SCREW | 16 | |
| 29 | HHS-080-040 | M8 x 40 LG HEX HD SCREW | 32 | |
| 30 | HHS-080-055 | M8 x 55 LG HEX HD SCREW | 32 | |
| 31 | HHS-080-060 | M8 x 60 LG HEX HD SCREW | 8 | |
| 32 | HHS-120-035 | M12 x 35 LG HEX HD SCREW | 16 | |
| 33 | NUT-060 | M6 HEX NUT | 36 | |
| 34 | NUT-080 | M8 HEX NUT | 46 | |
| 35 | NUT-120 | M12 HEX NUT | 4 | |
| 36 | SHS-060-020 | M6 x 20 LG HEX SKT HD CAP SCREW | 20 | |
| 37 | SHS-060-035 | M6 x 35 LG HEX SKT HD CAP SCREW | 4 | |
| 38 | WAS-040 | M4 PLAIN WASHER | 6 | |
| 39 | WAS-060 | M6 PLAIN WASHER | 72 | |
| 40 | WAS-080 | M8 PLAIN WASHER | 126 | |
| 41 | WAS-120 | M12 PLAIN WASHER | 4 | |

| | | |
|------------------------------------|--|---|
| RELEASE STATUS | Approved | |
| WELDING SPEC. | | |
| MATERIAL SPEC. | | |
| MATERIAL | SEE BOM | |
| TOLERANCES UNLESS OTHERWISE STATED | LINEAR DIMENSIONS UP TO ± . . ; OVER ± . . | |
| | ANGULAR DIMENSIONS ± . . | |
| | ALL DIMENSIONS IN mm UNLESS OTHERWISE STATED | |
| TOLERANCING ISO 8015 | | |
| DRN. | PMC | SCIENCE AND TECHNOLOGY FACILITIES COUNCIL |
| DATE. | 22/10/18 | DARESBURY LABORATORY |
| CKD. | RJS | CHESHIRE |
| DATE. | 28/11/19 | TITLE |
| APPD. | RJS | ESS BEAM TRANSPORT |
| DATE. | 28/11/19 | DOG LEG 2 LWU |
| | | DG2 No3 |
| | A0 | DRG. NO. SHEET 1 OF 2 ISSUE |
| | | 289-10884 |
| | | PTC CAD PART No 289-10884 |
| | | USED ON 289-10026 |

THIS DRAWING IS THE PROPERTY OF STFC AND MAY NOT BE COPIED OR USED FOR ANY PURPOSE OTHER THAN THAT FOR WHICH IT IS SUPPLIED WITHOUT THE EXPRESS WRITTEN AUTHORITY OF STFC.

THE ENVELOPE REQUIREMENT © APPLIES TO ALL FEATURES OF SIZE UNLESS OTHERWISE STATED. SEE ISO 14405-1 FOR DETAILS.

A FIRST ISSUE