

# VOR (Wide bandwidth chopper spectrometer)

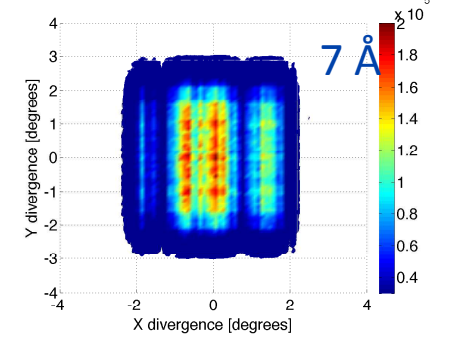
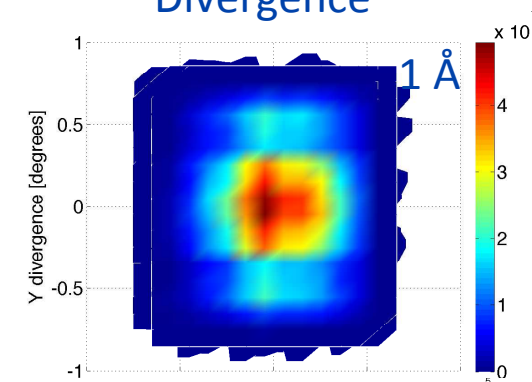
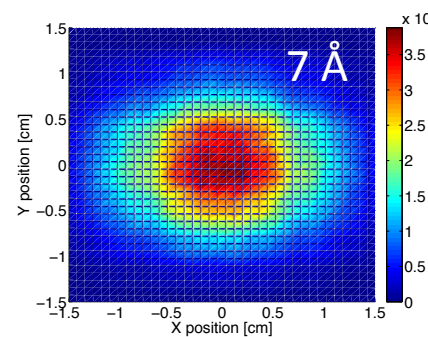
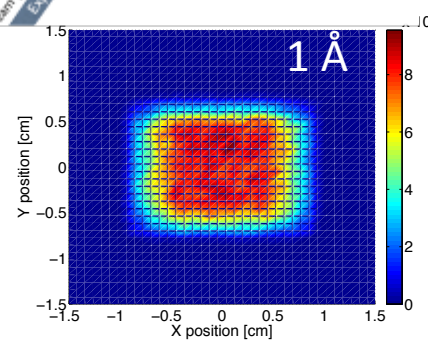
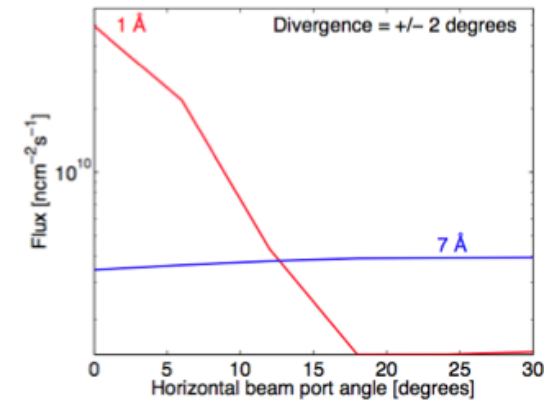
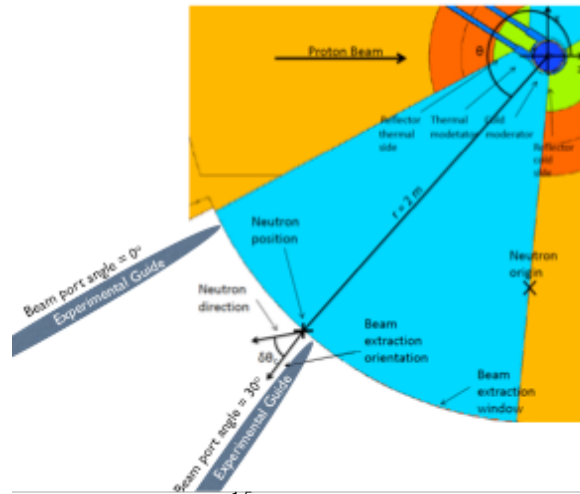
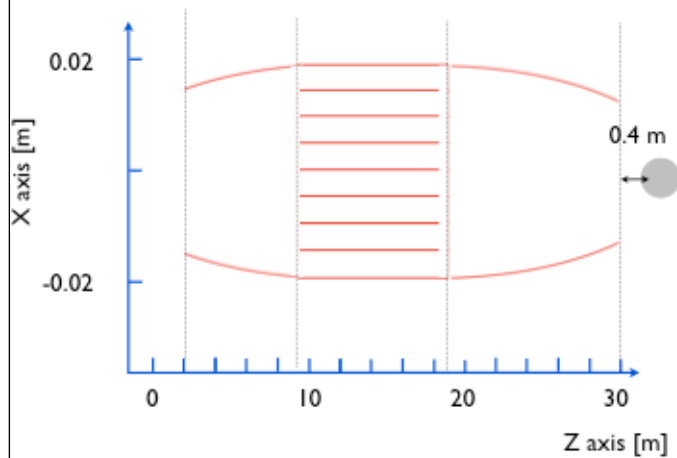
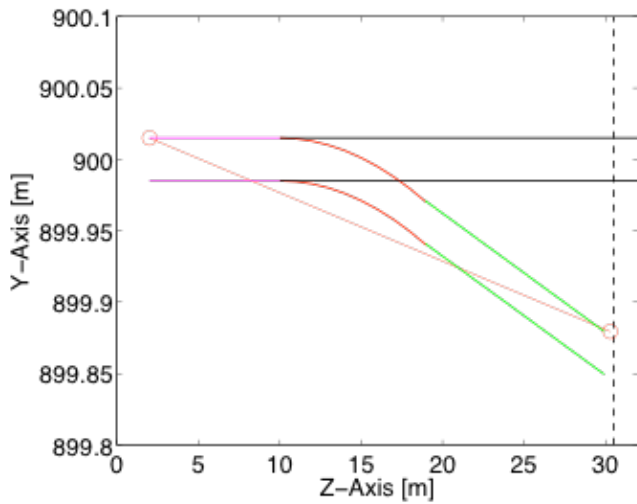
(~30.5 m moderator - sample)

$\Delta\lambda = 9.5 \text{ \AA}$  (single shot)

flux on  $1 \times 1 \text{ cm}^2$



## BiSpectral extraction

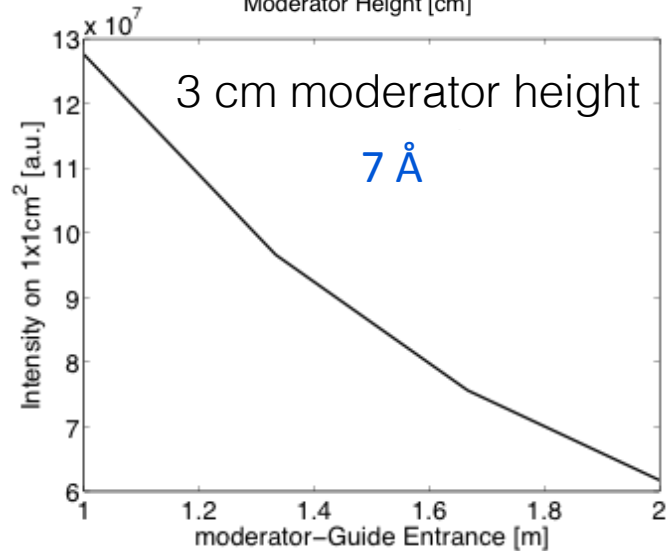
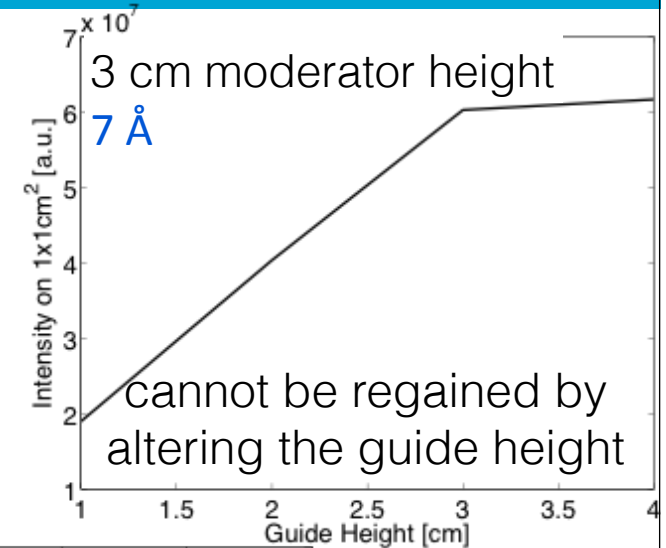
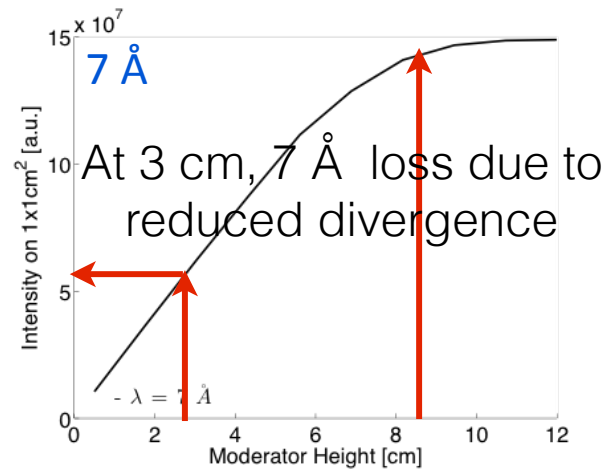
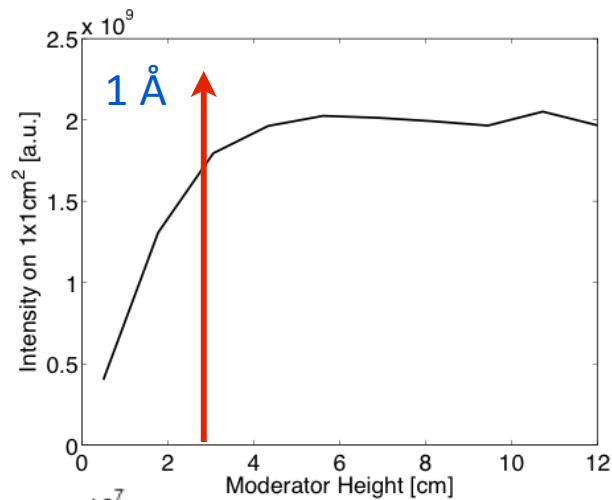


# VOR (Wide bandwidth chopper spectrometer)

(~30.5 m moderator - sample)

$\Delta\lambda = 9.5 \text{ \AA}$  (single shot)

Careful consideration of flux and divergence



regain flux by guide entrance  
closer to the moderator

