



PaNSOC Workshop Copenhagen

Dette og hint

2021-11-29 Sophie, Michael, Anton and Patrick



PaNOSC and ExPaNDS projects have received funding from the European Union's Horizon 2020 research and innovation programme under grant agreements 823852 and 857641, respectively.

Search API

- Do we think the search API is useful?
 - Is it covering the most common use cases?
 - “Organ Atlas” seems to have additional requirements beyond SearchAPI functionality.
 - Do we want to fix that ?
- The ELI Data Portal and the Organ Atlas must be build upon the API.
 - How about VISA?
- What are our experiences using the search API in a federated manner?
- We need a reference implementation of a server (SciCat,iCat) AND client ELI data portal against we permanently check the API.
 - Continuous testing, Integration and deployment.
 - Tracing deployed installations (Facility)
- The API must have a clear versioning schema.
- E.g. Traceability, Spec Versioning in github, review of code and spec.
- Governance: owner, contribution policies, permissions to merge pull requests need to be defined.
- Authorization schema for the API.
 - Anonymous access not compatible with some facility policies. (e.g. X-FEL, HZB ...)

The VISA portal integration

- The VISA portal is vital for ExPaNDS
- The extra “backend driver” for VISA is very much appreciated.
 - Allows us to integrate Citrix and others
 - Don’t know yet about pure Jupyter Server.
- Current situation (Let us know if not true)
 - Developed at the ILL gitlab system, which is not public.
 - Synced with the PaNOSC GitHub on regular basis, based on complete versions (not individual code changes.)
 - Seems to be a one way street (ILL -> PaNOSC GIT)
- Questions:
 - Are contributions from non ILL people envisioned.
 - If yes: how should that be done (in PaNOSC GitHub or asking for ILL account)
 - Is there an “Open Source” way path beyond PaNOSC?
 - Will the source still be open in the future (License)
 - Will the open source part be diverging from the ILL production one?
 - How do we centrally manage the ‘backend driver’ scripts. Close to VISA or completely separately?
- Should we operate a federated VISA portal in FedCloud through the EOSC Portal
 - How

AAI

- The PaNOSC work on the AAI is essential for the success of both projects.
- Right now, we didn't find a way to use the "Facility IdP" with the new UmbrellaID mechanism.
- Right now, in order to get the vo.panosc.eu eduperson-entitlement, one needs to go via the Umbrella IdP.
 - Everyone can get an Umbrella ID
 - And consequently, everyone can use resources at DESY (FedCloud)
 - We tried this morning!
 - As we don't have control, this won't be allowed for long.
 - EGI Disabled the Group Management within Check-in if not coming from umbrellaID. eduTEAMS/Umbrella.
 - E.g. we WERE able to provide more fine grained access management by creating sub groups.
 - This seems no longer possible with the eduTEAMS proxy server (VO manager)

AAI



umbrellaID: Confidentiality for a lifetime

Username:

Password:

Strength

□□□□

Password (once again):

Email:

Verification Image:

ag8cb

Verification Code:

Create Account

Login via your home organisation

Unknown User

Text Only

openstack.

Federated • desy-fedcloud

Project / Compute / Overview

fef51468-c00b-41d8-be62-7b0b1243d9a8@umbrellaid.org

API Access

Compute

Overview

Instances

Images

Key Pairs

Server Groups

Volumes

Network

Orchestration

Object Store

Identity

Limit Summary

Compute

Instances

Used 3 of 10

VCPUs

Used 3 of 20

RAM

Used 6GB of 50GB

Volume

Volumes

Used 1 of 10

Volume Snapshots

Used 0 of 10

Volume Storage

Used 10GB of 1000GB

Project / Compute / Overview

fef51468-c00b-41d8-be62-7b0b1243d9a8@umbrellaid.org

Overview

Limit Summary

Compute



Instances
Used 3 of 10



VCPUs
Used 3 of 20



RAM
Used 6GB of 50GB

Volume



Volumes
Used 1 of 10



Volume Snapshots
Used 0 of 10

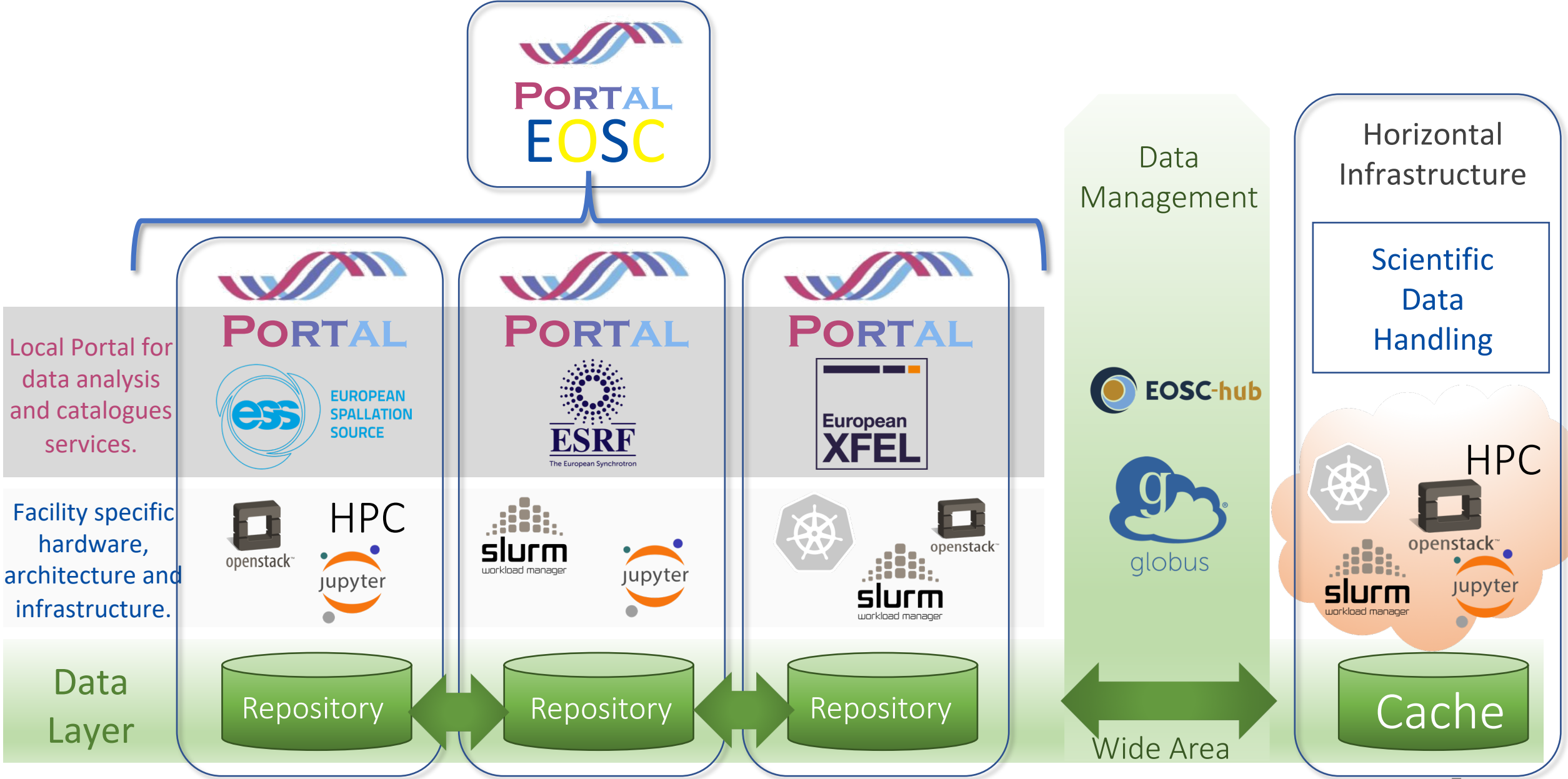


Volume Storage
Used 10GB of 1000GB

AAI (Cont.)

- We should move to Facility-IdP-Only as fast as possible and disable the Umbrella IdP.
- We need a mechanism for PaN administrators to create more fine grained group management
 - Create sub VO's at the Proxy level
 - To allow better mapping (sub VO -> permissions) at the facilities, e.g.:
 - Only 2 VM's for public
 - More resources for particular facility group members

Connection between the data catalogues and the analysis pipelines.



Work on FAIR Data, Data Policy Consultation and FAIR Assessment

- See document for this workshop.