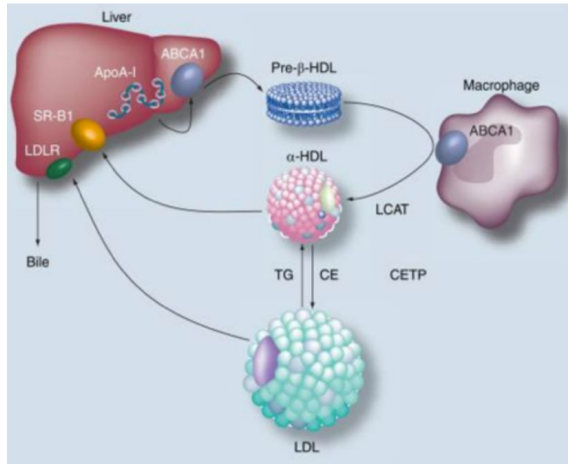


Rohith Ravi, Dr. Mounir Tarek\*

[rohith.ravi@univ-lorraine.fr](mailto:rohith.ravi@univ-lorraine.fr), Laboratoire de Physique et Chimie Théoriques (LPCT), Université de Lorraine, Nancy, France

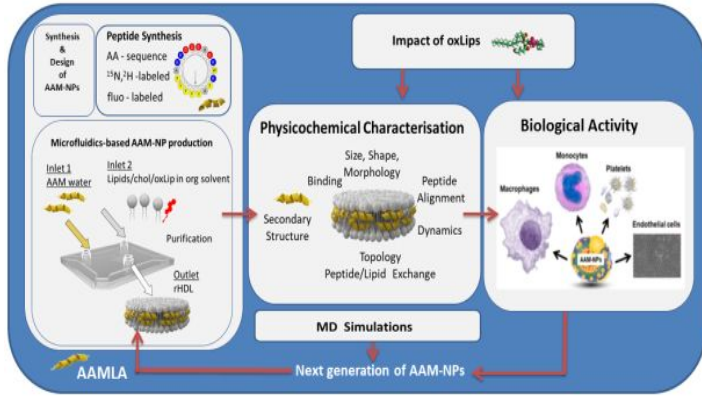


## Introduction



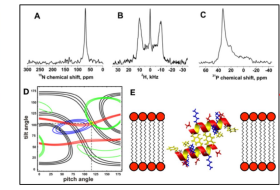
Reverse Cholesterol Transport (RCT)

## Work Plan

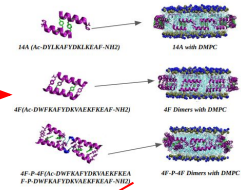


## Work in progress

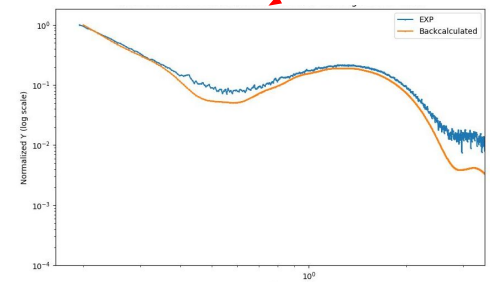
NMR studies:



MD simulations:



SAXS studies:



## Hypothesis:

our hypothesis is that a fundamental physicochemical understanding of the supramolecular morphology, dynamics and topology of new innovative nanoparticles will assist in the rational design and tuning of their composition to optimize their biological impact as potential therapeutics cardiovascular diseases.