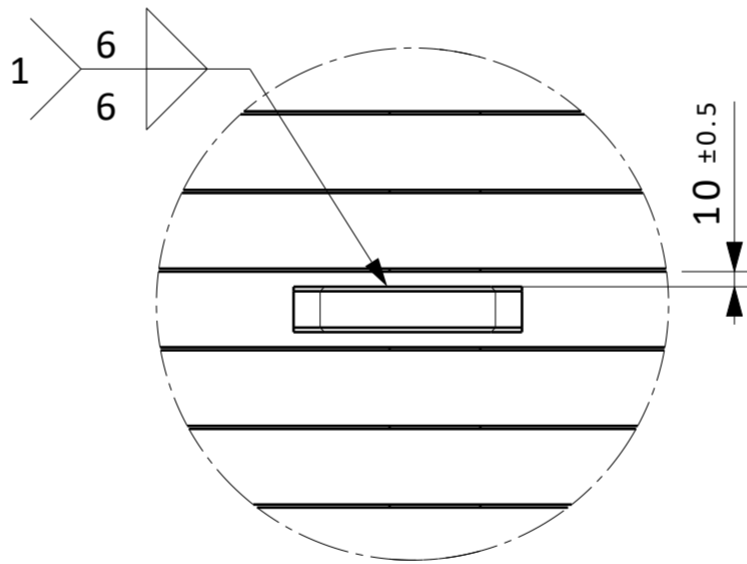
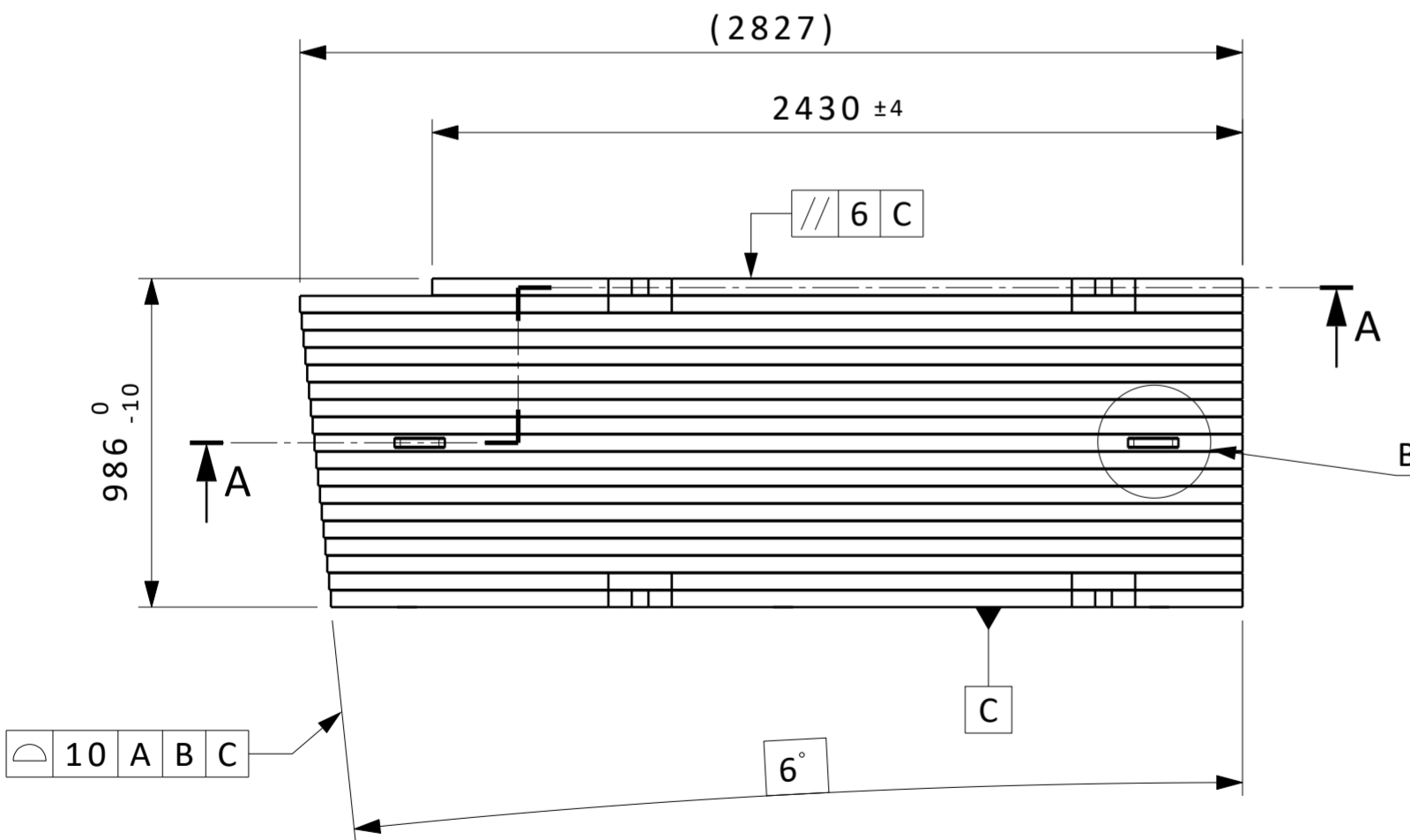
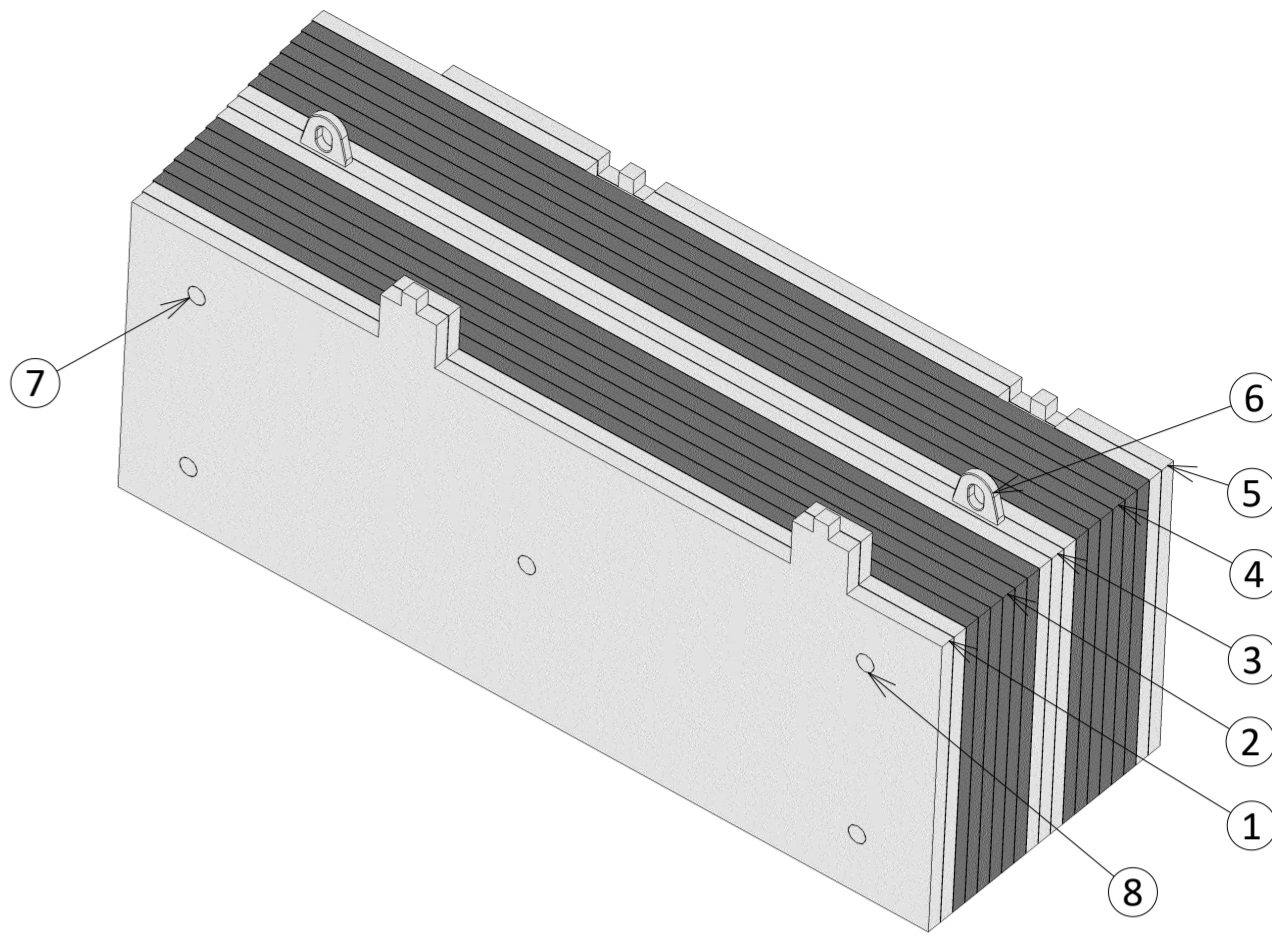


SECTION CUT A-A



DETAIL B (1:5)





8	ESS-0147773	3	ESS-0147773	Rod 60x986	-	BunkerSteel	-	-
7	ESS-0149246	2	ESS-0149246	Rod 60x934	-	BunkerSteel	-	-
6	ESS-0105485	2	ESS-0105485	Lifting eye	-	BunkerSteel	-	-
5	ESS-0112083	1	ESS-0112083	Wall Seg L31	-	BunkerSteel	-	-
4	ESS-0112082	1	ESS-0112082	Wall Seg L32	-	Bunker_BoratedPE	-	-
3	ESS-0102635	1	ESS-0102635	Wall Seg L33	-	BunkerSteel	-	-
2	ESS-0102632	1	ESS-0102632	Wall Seg L32	-	Bunker_BoratedPE	-	-
1	ESS-0102630	1	ESS-0102630	Wall Seg L31	-	BunkerSteel	-	-
Item	Part Number	Qty	CAD Number	Title	Description	Material	Material std	Material cert.

NOTE:

1. For assembly of the wall block see instruction ESS-0191778

2. Dimensions not stated on drawing 3D model applies

6	A	B	C
2	A	B	C

ASSY WEIGHT: 9 276,82 kg		DRAWING TYPE; TITLE; SUPPLEMENTARY TITLE Assembly Drawing Wall Block L3			
General Tolerances					
Linear Dimensions, Form and Position:		ISO 2768-mK		MODELED BY thorbjornlindwall	
Chamfers, Radii and Angular Dim's:		ISO 2768-vK		DRAWING CREATED 03/11/2017	
SURFACE FINISH		Min. Ra 50		DRAWING RELEASED	
Documentation protection as per		ISO 16016		DRAWING NUMBER ESS-0102629.1	
 EUROPEAN SPALLATION SOURCE	 DESIGN SITE ESS Lund	CHECKED BY		LIFECYCLE LABEL	
		APPROVED BY		REV. 1.0	
		QUALITY CONTROLLED BY		SHEET 1/1	
				Produced to ISO 1101, 8015 and 1302	